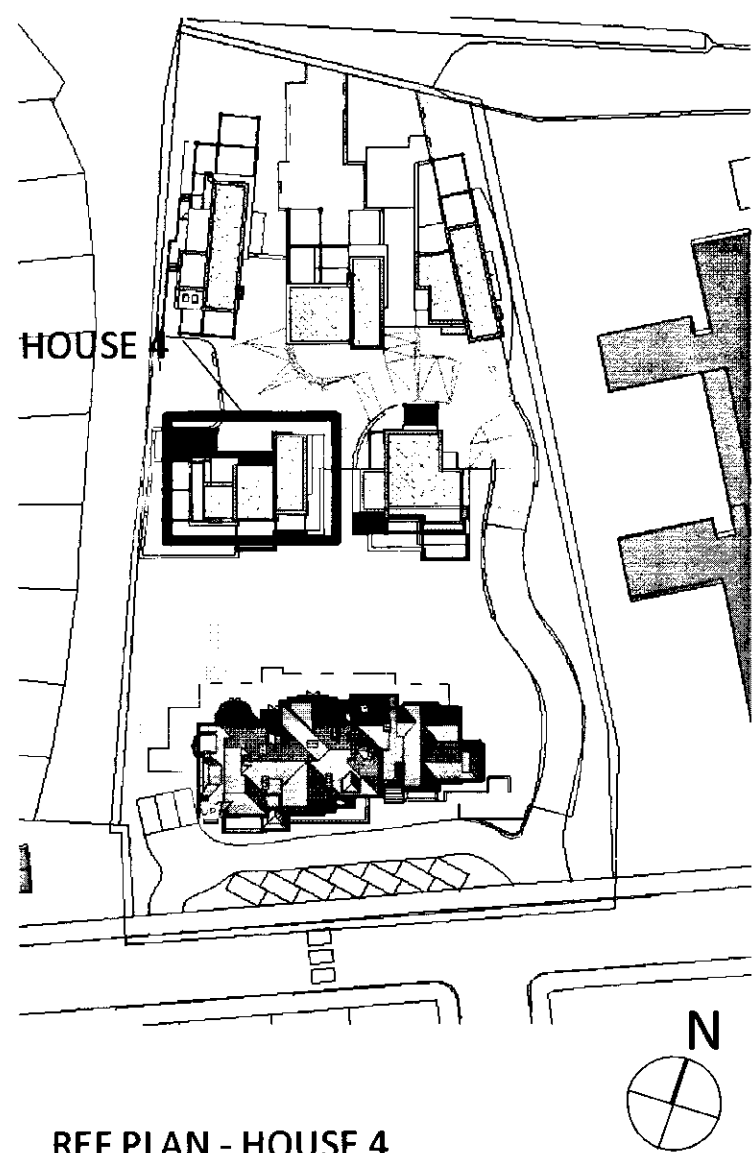
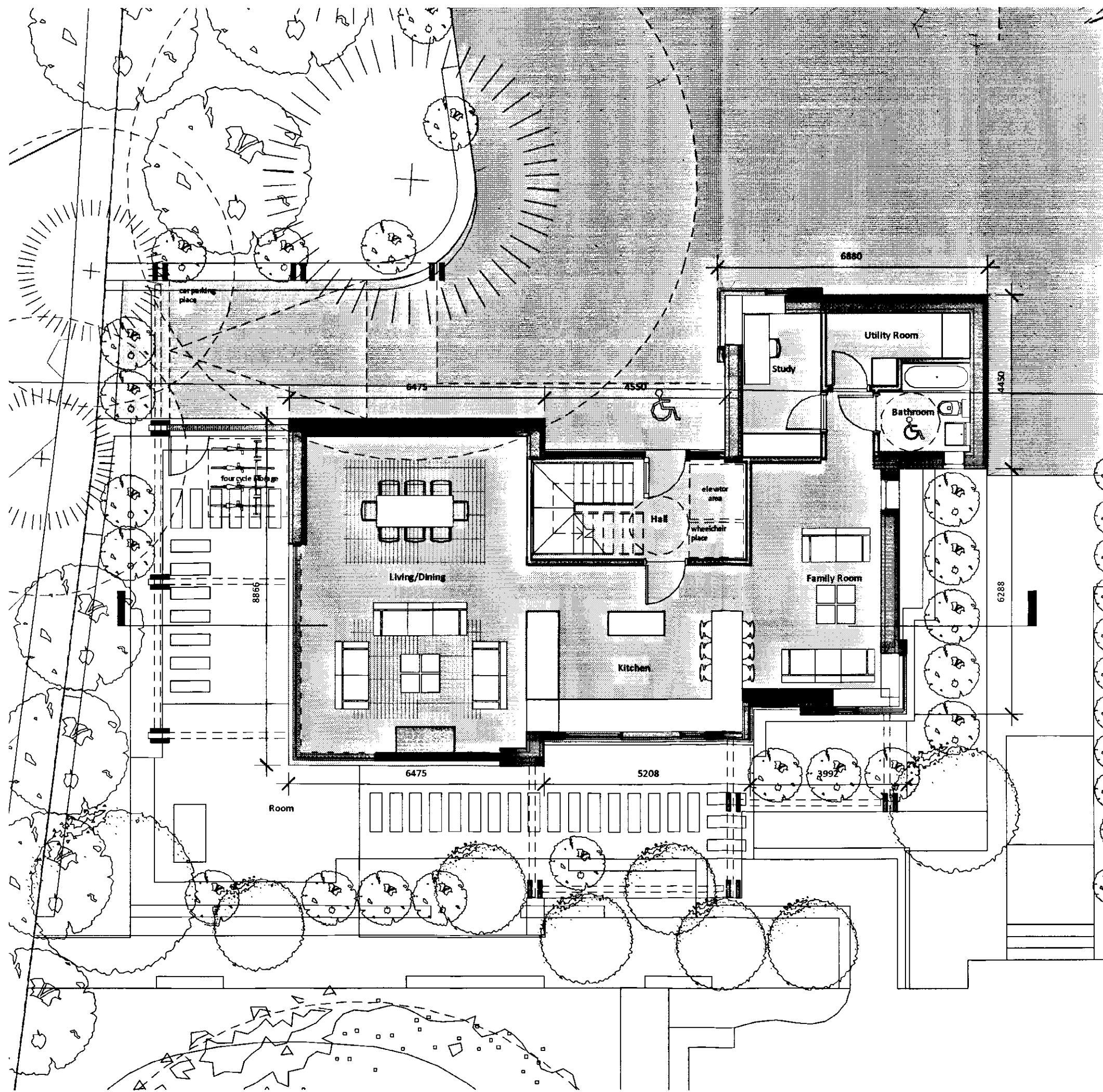


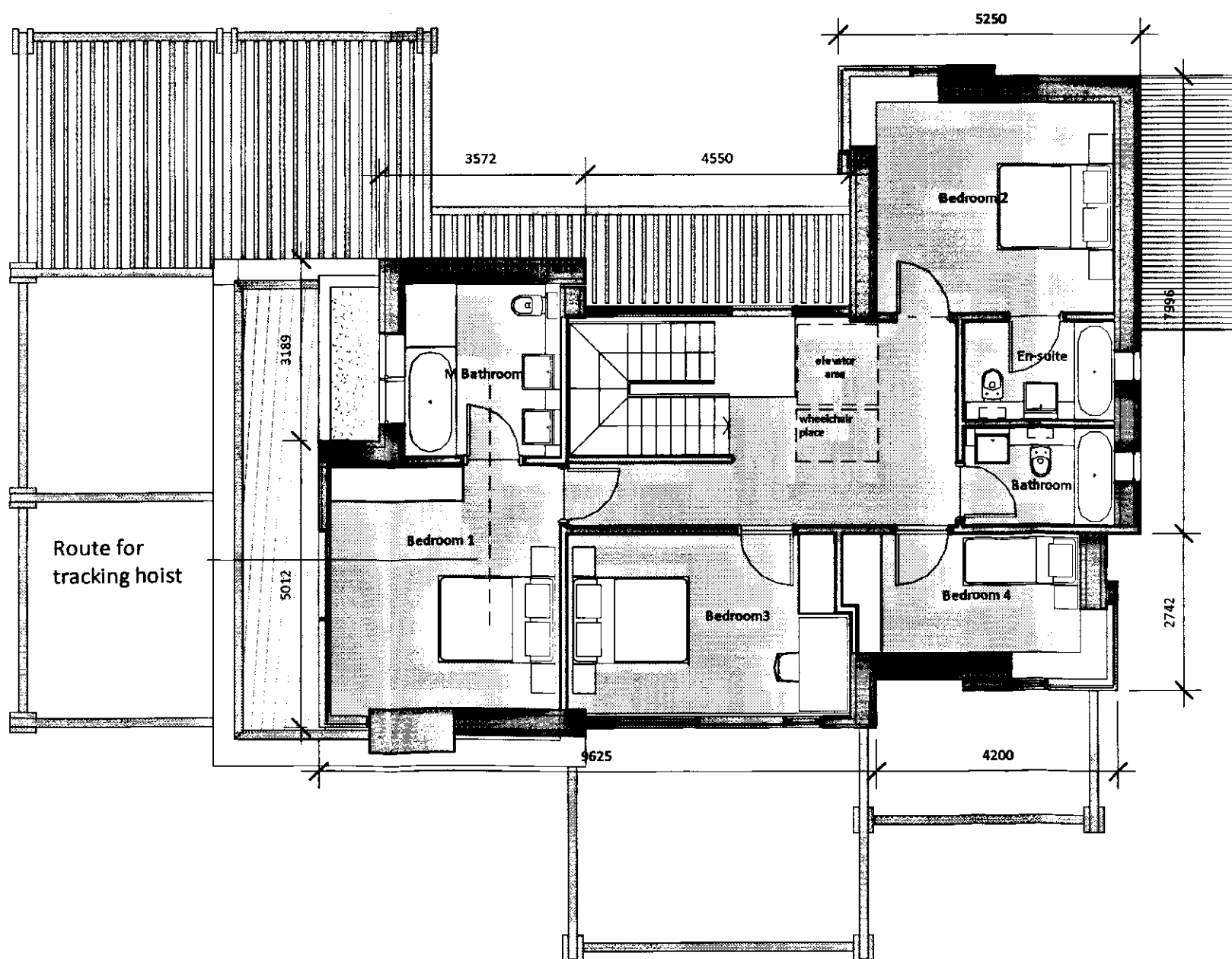
HOUSE 4 - SECTION
1:100



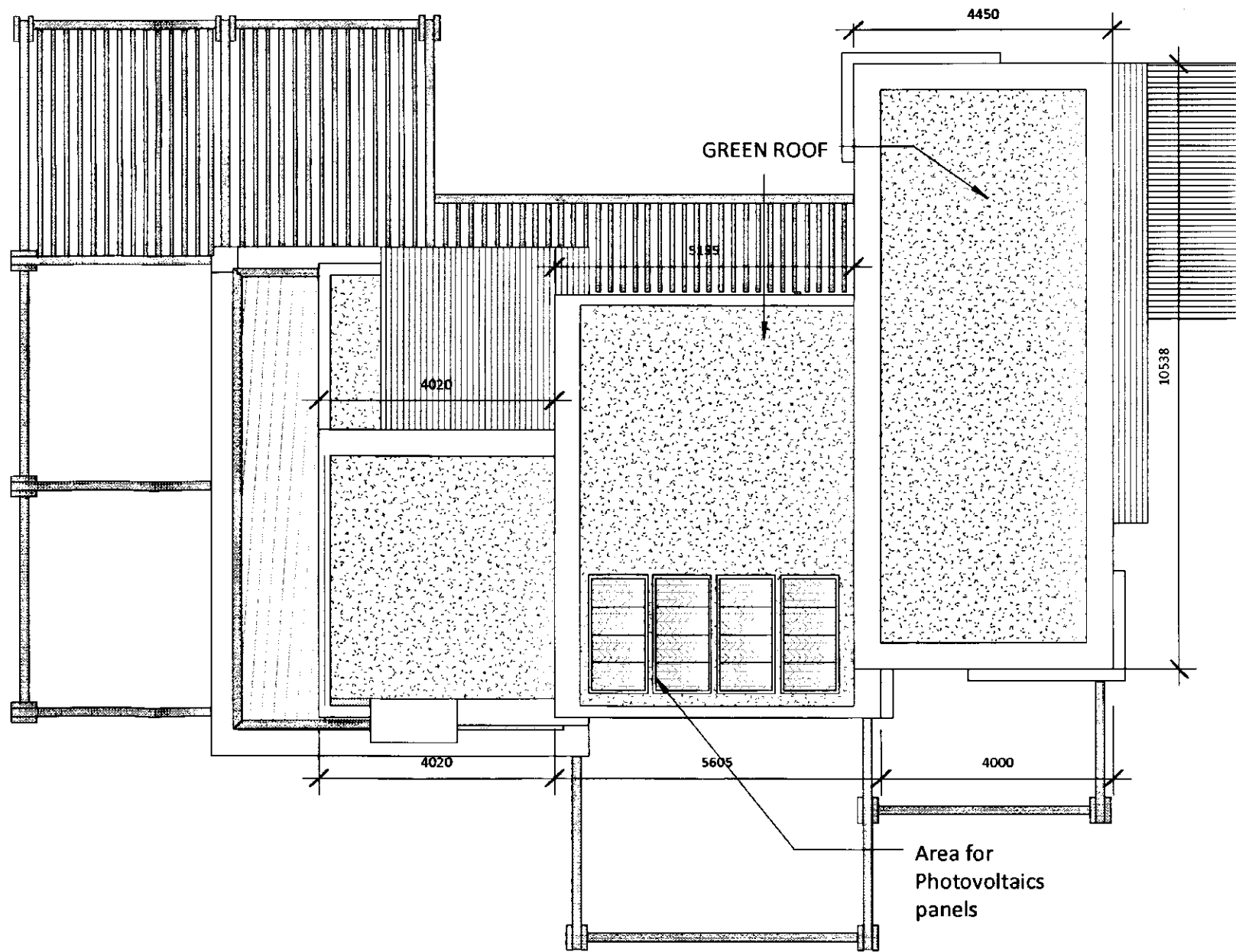
REF PLAN - HOUSE 4
1:1000



HOUSE 4 - GL
1:100



HOUSE 4 - L1
1:100



HOUSE 4 - RL
1:100

SOUTHWARK COUNCIL PLANNING	
CASE FILE COPY	
DATE RECEIVED	DECISION AND DATE
08 APR 2011	
REGISTERED NUMBER	
AP 37	

General notes:
This drawing is copyright of KSR architects. This drawing must be read in conjunction with the designers risk assessment, specification and all other relevant documentation and drawings. KSR architects accept no liability for any expense, loss or damage of whatsoever nature and however arising from any variation made to this drawing or in the execution of the work to which it relates which has not been referred to them and their approval obtained.
Do not scale from this drawing or the digital data, only figured dimensions are to be used. For Planning refer to linear scale.
Check all dimensions on site.

Notes/Legends

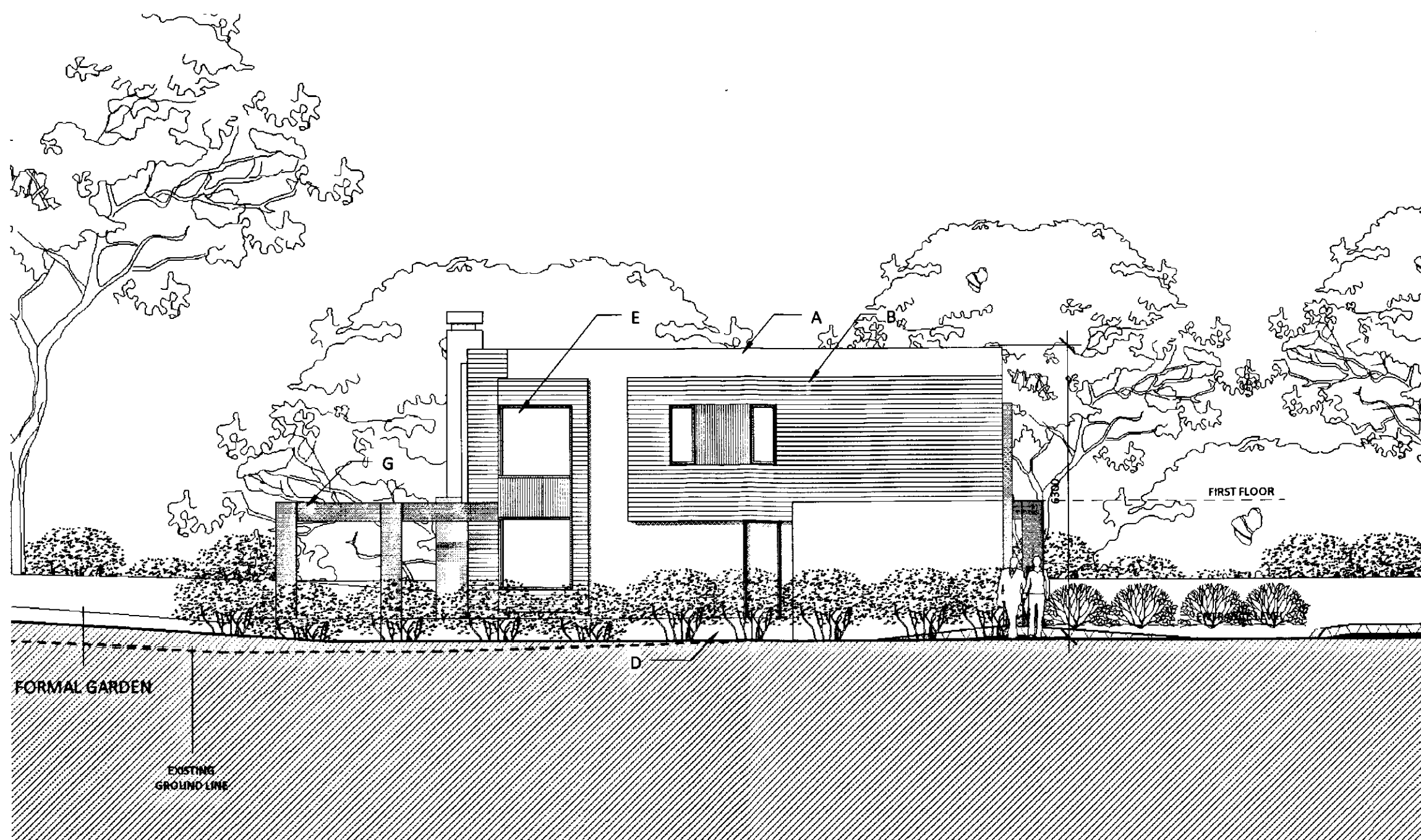
Dwelling type (beds/persons)	Essential GIA (sq.m)	Living/dining/kitchen	Separate Kitchen/diner?	Bed 1 (sq.m)	Bed 2 (sq.m)	Bed 3 (sq.m)	Bed 4 (sq.m)	Bathroom (sq.m)	Entry Level WC	Storage (sq.m)	Study (sq.m)	Open Space (sq.m)
HOUSE 4 (2 storey)	LHDG	117.0	31.0	yes	12.8	12.8	12.8	8.4	1	1	1.55	10.0
	KSR	217.2	87.8	yes	17.0	15.3	15.1	8.4	3	1	7.4	
ALL COMPLIANT												

PLANNING APPLICATION
Dec 2010

KSR architects 14 Greenfield Street London W1V 6TD		t: +44 (0)20 7692 5000 f: +44 (0)20 7692 5050 www.ksr-architects.com		KSR architects	
Project: 123 GROVE PARK London		Title: PROPOSED HOUSE 4 - PLANS & SECTION			
Rev:	Note:	Date:	Dec 2010	Drawn By:	LFG
© KSR architects		Scale:	As indicated	@A1	
Project Ref:	GRP	Drawing No:	GRP - H4 104	Revision:	



HOUSE 4 - SOUTH ELEVATION
1:100

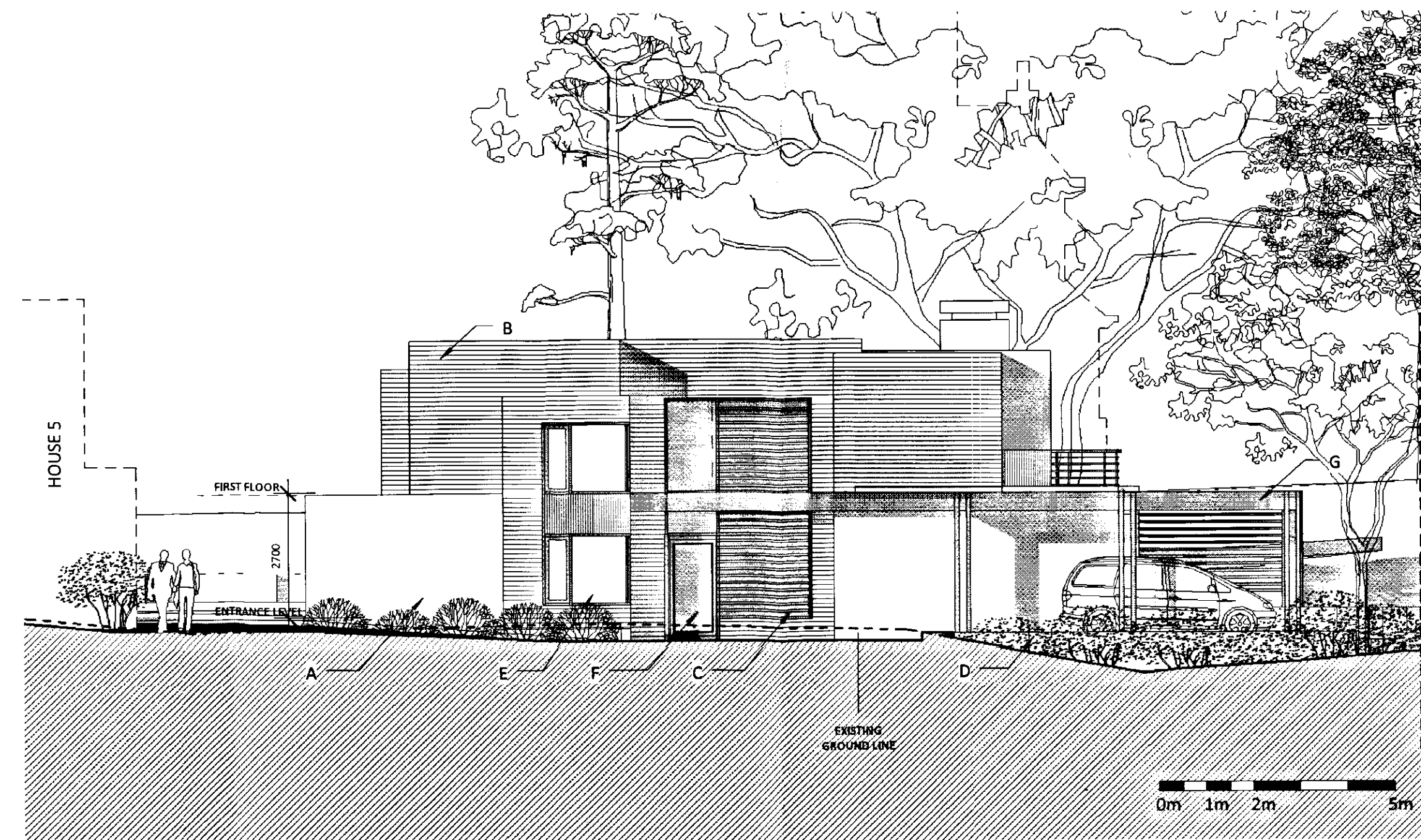


HOUSE 4 - EAST ELEVATION
1:100



HOUSE 4 - WEST ELEVATION
1:100

SOUTHWARK COUNCIL PLANNING	
CASE FILE COPY	
RECEIVED	DECISION AND U
08 APR 2011	
REGISTERED NUMBER	
10 AP 375	



HOUSE 4 - NORTH ELEVATION
1:100

General notes:
This drawing is copyright of KSR architects. This drawing must be read in conjunction with the design's risk assessment, specification and all other relevant documentation and drawings. KSR architects accept no liability for any expense, loss or damage of whatsoever nature and however arising from any variation made to this drawing or in the execution of the work to which it relates which has not been referred to them and their approval obtained.
Do not scale from this drawing or the digital data, only figured dimensions are to be used. For Planning refer to linear scale.
Check all dimensions on site.

Notes/Legends

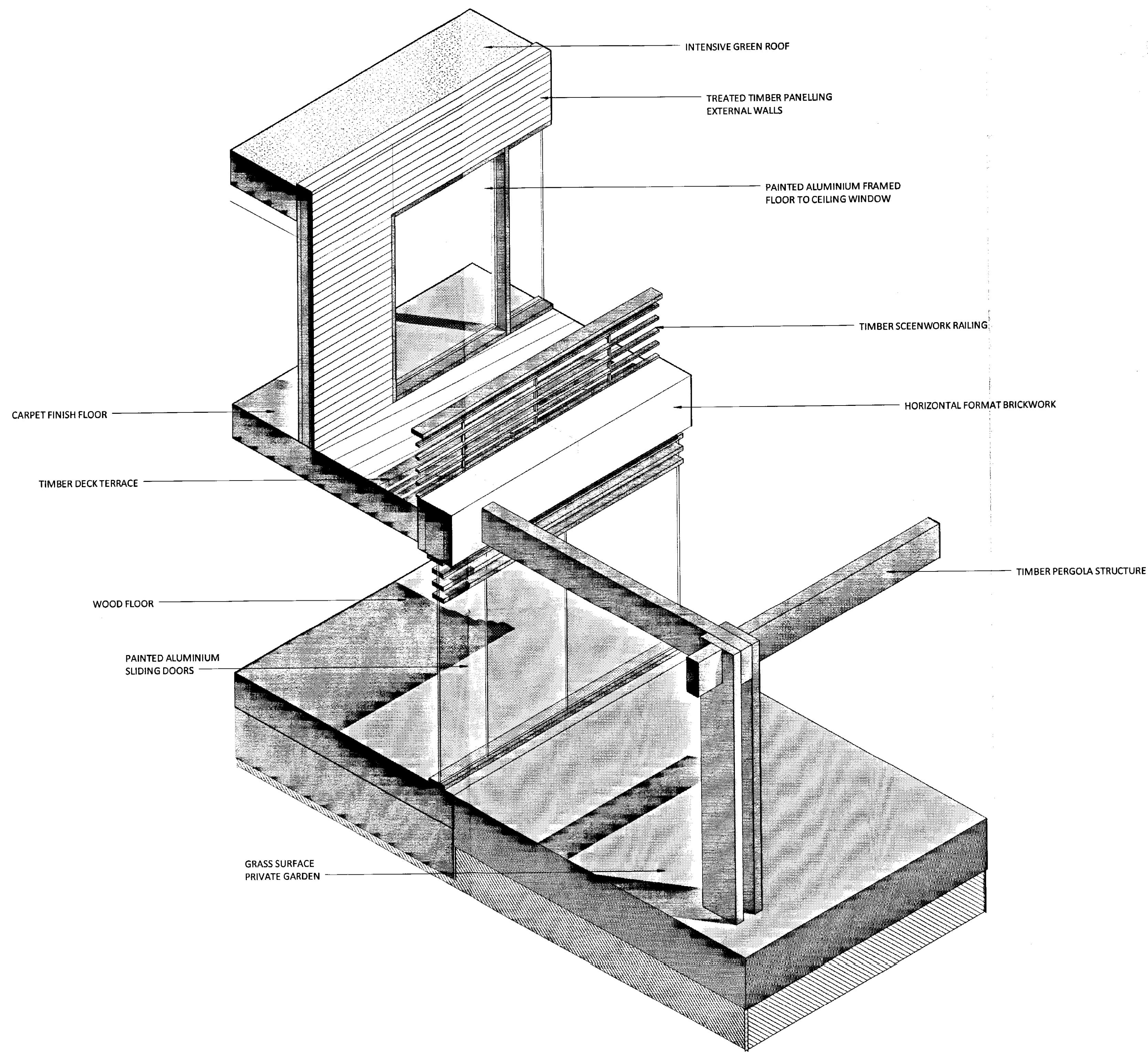
KEY LEGEND

- A - HORIZONTAL FORMAT BRICKWORK
- B - TREATED TIMBER PANELLING
- C - TIMBER SCREENWORK
- D - BRICK PLANTER

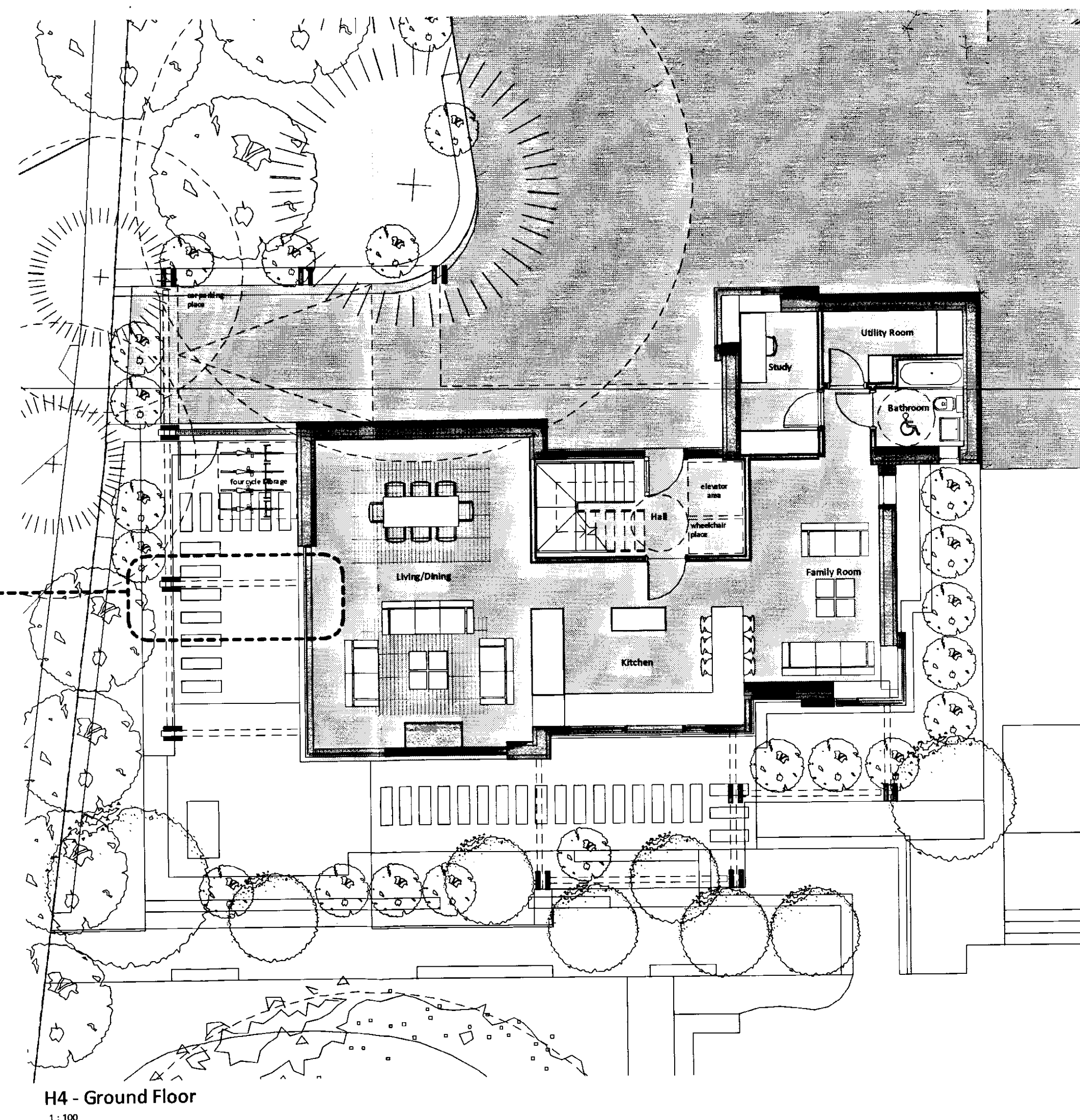
- E - PAINTED ALUMINIUM FRAMED WINDOW
- F - HARDWOOD TIMBER DOOR
- G - TIMBER PERGOLA STRUCTURE

PLANNING APPLICATION
Dec 2010

KSR architects 14 Greenfield Street London NW1 6ND		t: +44 (0)20 7592 5000 f: +44 (0)20 7592 5050 www.ksr-architects.com		KSR architects	
Project: 123 GROVE PARK London		Title: PROPOSED HOUSE 4 - ELEVATIONS			
Rev:	Notes	Date: Dec 2010	Drawn By: LRG	Checked: LRG	Project No: GRP
© KSR architects		Scale: 1:100 @A1 / 1:200 @A3	Project No: GRP	Drawing No: GRP - H4 304	Revision:



DETAIL AXONOMETRIC (House 4)



SOUTHWARK COUNCIL PLANNING	
CASE FILE COPY	
DATE RECEIVED	DECISION AND DATE
08 APR 2011	
REGISTERED NUMBER	
AP 37	

General notes:

This drawing is copyright of KSR architects. This drawing must be read in conjunction with the designer's risk assessment, specification and all other relevant documentation and drawings. KSR architects accept no liability for any expense, loss or damage of whatsoever nature and however arising from any variation made to this drawing or in the execution of the work to which it relates which has not been referred to them and their approval obtained. Do not scale from this drawing or the digital data, only figured dimensions are to be used. For Planning refer to linear scale. Check all dimensions on site.

Notes/Legends

Stamp

Key Plan

PLANNING APPLICATION
Dec 2010

KSR architects 14 Greenland Street London NW1 0ND		t: +44 (0)20 7892 5050 f: +44 (0)20 7892 5050 www.ksr-architects.com		KSR architects	
Project: 123 GROVE PARK London			Title: AXONOMETRIC DETAIL (Proposed House 4)		
Rev:	Note:	Date:	Dec 2010	Drawn By:	LRG
		Checked:	LRG	Project Ref:	GRP
		Scale:	1:100 @A1 / 1:200 @A3	Drawing No:	GRP - DT 402
		Revision:			